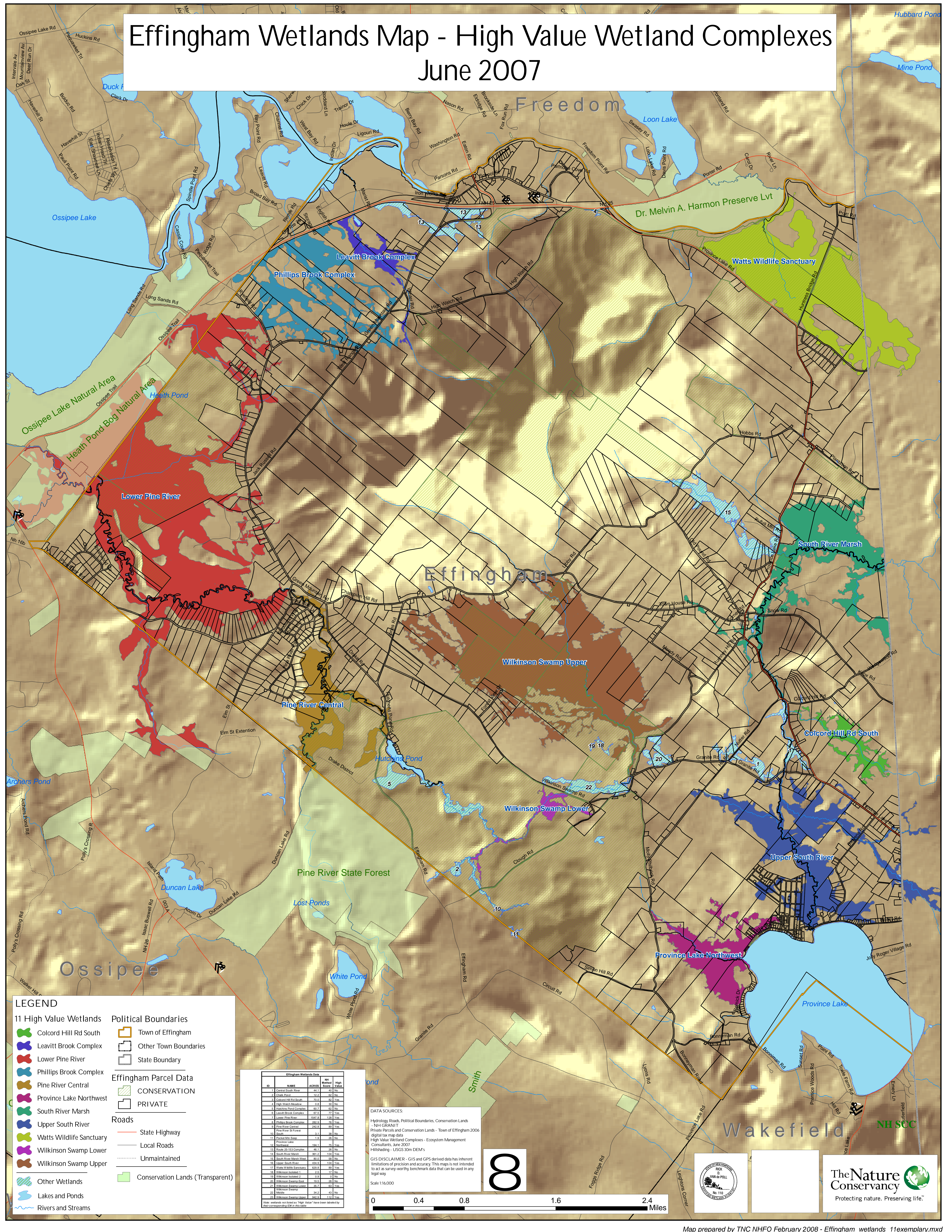


Effingham Wetlands Map - High Value Wetland Complexes

June 2007



LEGEND

- 11 High Value Wetlands**
 - Colcord Hill Rd South
 - Leavitt Brook Complex
 - Lower Pine River
 - Phillips Brook Complex
 - Pine River Central
 - Province Lake Northwest
 - South River Marsh
 - Upper South River
 - Watts Wildlife Sanctuary
 - Wilkinson Swamp Lower
 - Wilkinson Swamp Upper
- Other Wetlands**
 - Lakes and Ponds
 - Rivers and Streams
- Political Boundaries**
 - Town of Effingham
 - Other Town Boundaries
 - State Boundary
- Effingham Parcel Data**
 - CONSERVATION
 - PRIVATE
- Roads**
 - State Highway
 - Local Roads
 - Unmaintained
- Conservation Lands (Transparent)**

ID	NAME	ACRES	NH Method Score	High Value
1	Central South River	44.1	40	No
2	Clough Pond	19.0	83	Yes
3	Colcord Hill Rd South	48.1	25	No
4	Jolly Marsh Meadow	0.1	30	No
5	Maple Brook Complex	46.1	40	No
6	Leavitt Brook Complex	67.1	77	Yes
7	Lower Pine River	1547.0	128	Yes
8	Phillips Brook Complex	380.0	75	Yes
9	Pine River Central	243.0	89	Yes
10	South River	3.1	38	No
11	Upper South River	1.0	28	No
12	Province Lake	184.1	26	No
13	Province Lake Complex	48.1	25	No
14	South River Marsh	36.1	104	Yes
15	South River Marsh Complex	46.1	40	No
16	Upper South River	434.1	104	Yes
17	Watts Wildlife Sanctuary	629.0	89	Yes
18	Wilkinson Swamp 1	2.0	12	No
19	Wilkinson Swamp 2	0.1	0	No
20	Wilkinson Swamp East	19.0	28	No
21	Wilkinson Swamp Lower	39.1	63	Yes
22	Wilkinson Swamp	34.2	43	No
23	Wilkinson Swamp Upper	142.0	112	Yes

DATA SOURCES:
 Hydrology Roads, Political Boundaries, Conservation Lands - NH GRANIT
 Private Parcels and Conservation Lands - Town of Effingham 2006 digital tax map data
 High Value Wetland Complexes - Ecosystem Management Consultants, June 2007
 Hillshading - USGS 30m DEM's

GIS DISCLAIMER: GIS and GPS derived data has inherent limitations of precision and accuracy. This map is not intended to act as survey-worthy benchmark data that can be used in any legal way.

Scale 1:16,000

