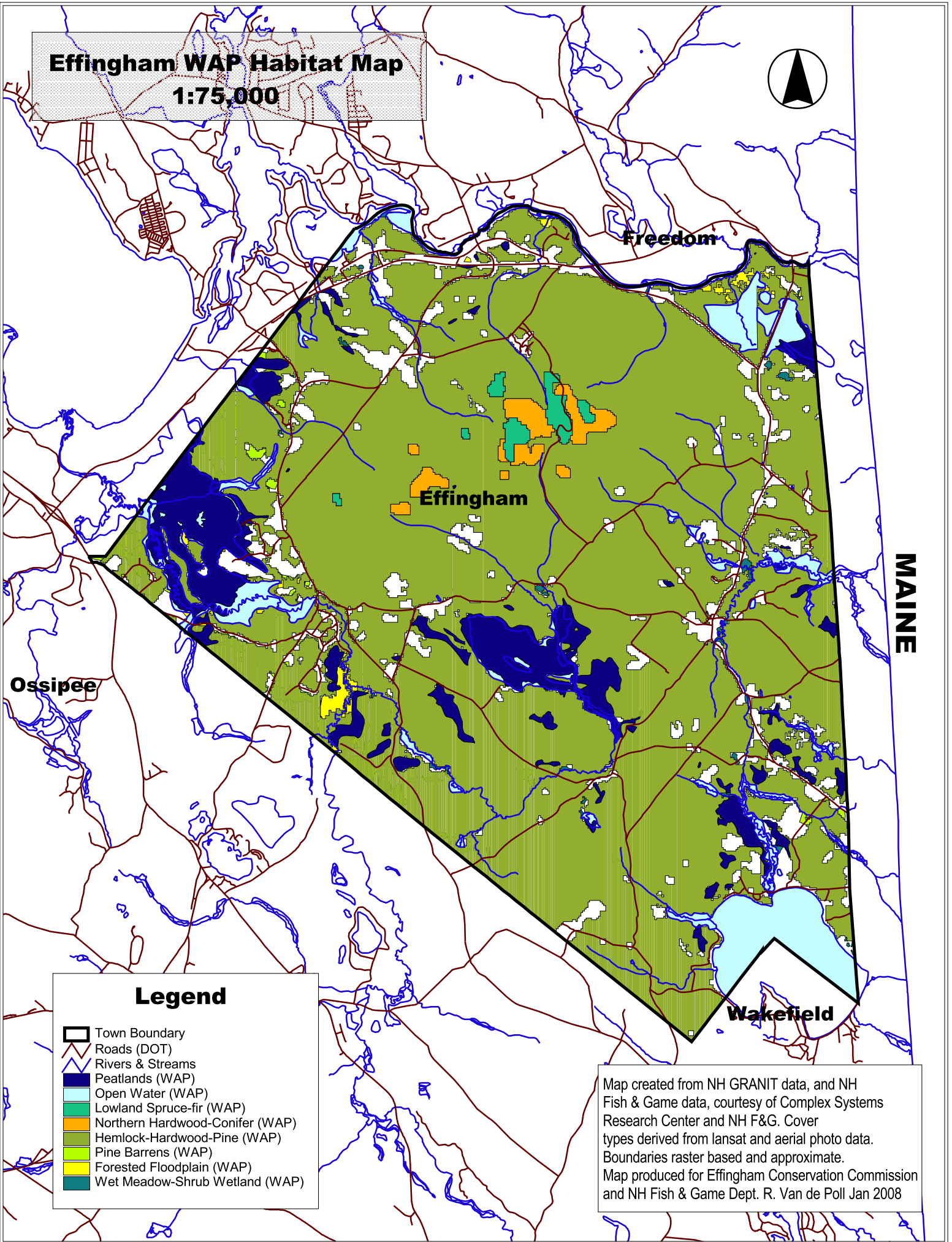


Effingham WAP Habitat Map

1:75,000



Legend

- Town Boundary
- Roads (DOT)
- Rivers & Streams
- Peatlands (WAP)
- Open Water (WAP)
- Lowland Spruce-fir (WAP)
- Northern Hardwood-Conifer (WAP)
- Hemlock-Hardwood-Pine (WAP)
- Pine Barrens (WAP)
- Forested Floodplain (WAP)
- Wet Meadow-Shrub Wetland (WAP)

Map created from NH GRANIT data, and NH Fish & Game data, courtesy of Complex Systems Research Center and NH F&G. Cover types derived from lansat and aerial photo data. Boundaries raster based and approximate. Map produced for Effingham Conservation Commission and NH Fish & Game Dept. R. Van de Poll Jan 2008